


Gosforth East Middle School Policy Proforma			
Policy Number: 2	Name: Accessibility Plan		
Agreed Date: Nov 2019		Agreed by: Governing Body	
Longevity 3 Years	Review Date: Nov 2022		

At GEMS we ensure that all pupils, staff and visitors (including those with disabilities) have full and equal access to:

- The Curriculum (Pupils)
- The physical environment
- Written information (signage, transcripts, letters and records)

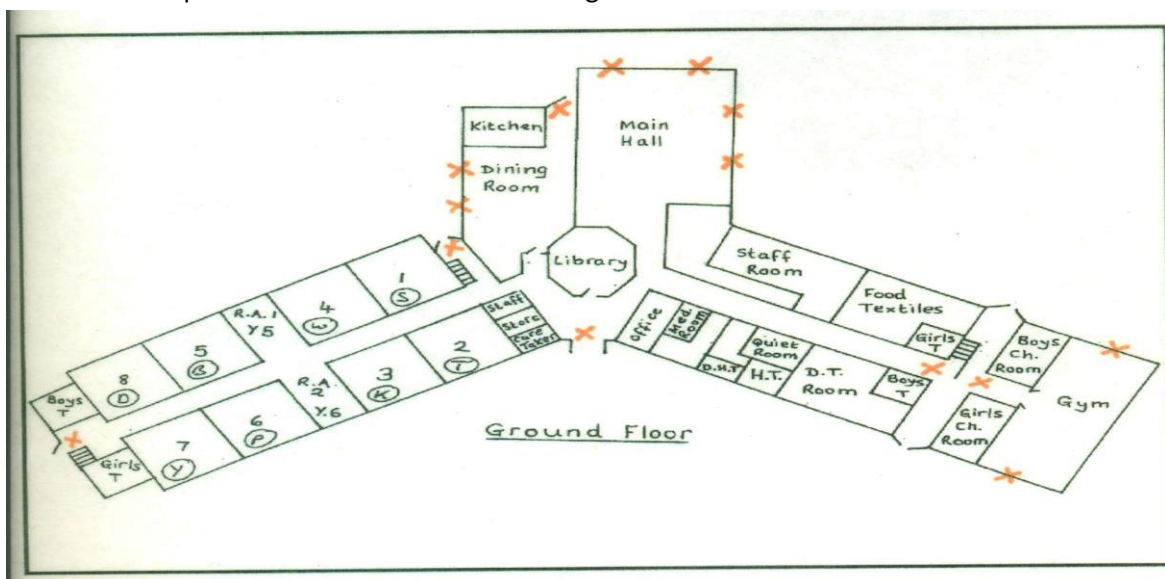
The Curriculum

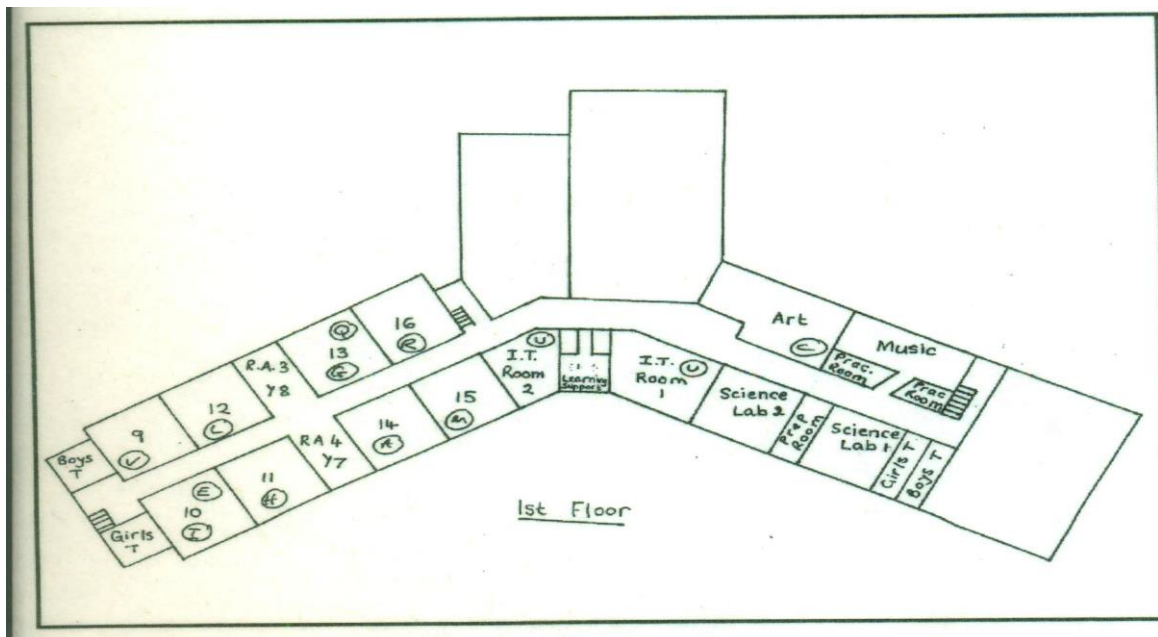
Lessons are differentiated and resources (including human resources) adapted to meet an individual pupil's needs. This may also include reducing class sizes and changing the curriculum eg: outdoor education.

The Physical environment

The physical environment meets the needs of all stakeholders including those with disabilities. This includes wheelchair access, a lift, disabled toilets and disabled parking.

Please see the plan of the school below indicating the areas mentioned.





Policy updates Nov 2019 by the governing body. This policy will be updated in three years unless changes to the building are made before this date.